

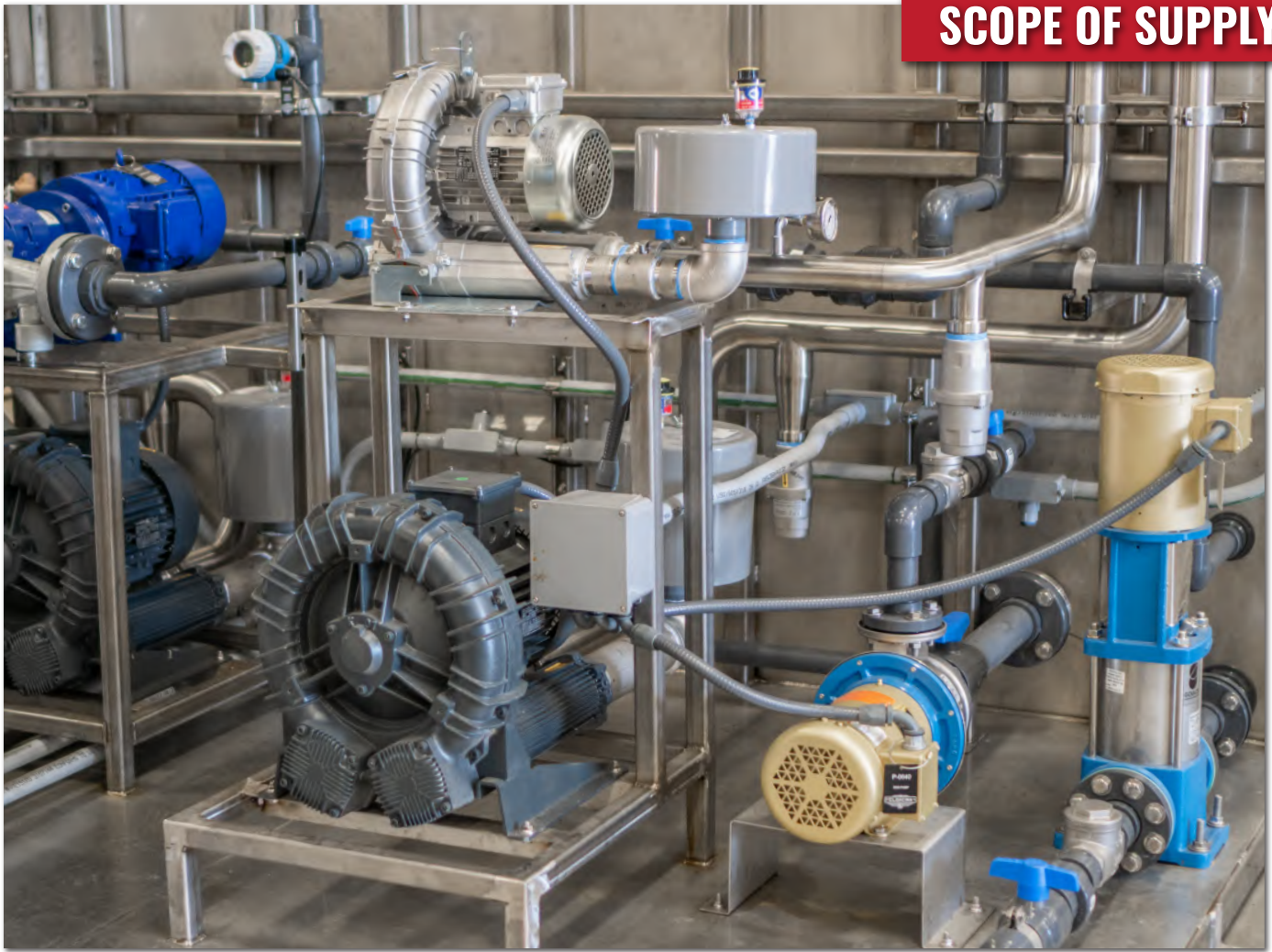


CASE STUDY:

CARNEROS WAREHOUSING

10,000 GPD MEMPAC™ - 110
Sonoma, CA





CLOACINA SUPPLIED THE FOLLOWING FOR THIS PROJECT:

EQUIPMENT: *MEMPAC-M 10K*

HEADWORKS: *2mm screw/auger screen with wedge wire screen segment*

PRIMARY TREATMENT: *Cloacina high rate roughing filter with pH adjustment*

SECONDARY TREATMENT: *Activated sludge*

CLARIFICATION: *Ultrafiltration (UF) Membrane*

CONTROLS: *Cloacina's controls system*

SLUDGE HANDLING: *Cloacina's automated wasting system*

DESIGN PARAMETERS

MODEL SUPPLIED: **MEMPAC-110**

INFLUENT PARAMETERS

AVERAGE DAILY FLOW	10,000 GPD
BIOCHEMICAL OXYGEN DEMAND	5,000 MG/L
TOTAL SUSPENDED SOLIDS	600 MG/L
INFLUENT TYPE	FOOD AND BEVERAGE

EFFLUENT QUALITY

BIOCHEMICAL OXYGEN DEMAND	< 10 MG/L
TOTAL SUSPENDED SOLIDS	< 10 MG/L

PROJECT TEAM

INSTALLATION

CARNEROS WAREHOUSING

ENGINEERING

THE WALLACE GROUP
805.695.5220
wallacegroup.us

PROJECT DETAILS



OVERVIEW

Cloacina provided Carneros Warehousing with a MEMPAC-110K MBR to surpass their City discharge requirement for future reuse. Cloacina worked closely with the Client and The Wallace Group to provide a seamless transition from their current system which was being demolished. This project utilized several of the existing tanks in the current design for equalization and sludge holding and provided new aeration and transfer equipment on the Cloacina skid. Cloacina worked with the Client to swiftly commission the system in anticipation of immediate processing of raw influent.



For project videos, additional photos and more information, visit cloacina.com/carneros