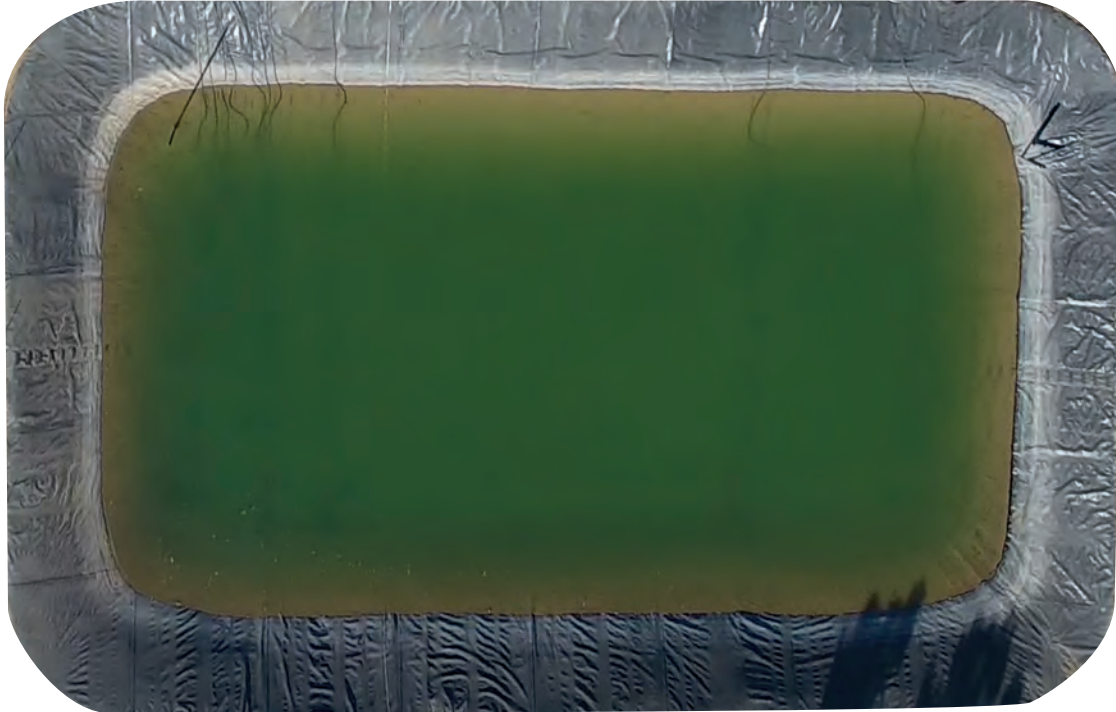


# TREATMENT POND VS MEMPAC-I

175'

248'



10'



30'

300 FT<sup>2</sup>  
SINGLE-TRAIN  
MEMPAC-I

43,560 FT<sup>2</sup> (1 ACRE)<sup>1</sup> TREATMENT POND

## WHICH OPTION IS RIGHT FOR YOUR WASTEWATER PROJECT?<sup>2</sup>

	WASTEWATER POND	MEMPAC-I
<b>FOOTPRINT</b>	One acre	Less than 1% of the area required for a treatment pond
<b>EQUIPMENT RUN TIMES</b>	Ponds must be <b>CONSTANTLY</b> aerated year round	Equipment operation time automatically adjusts to flow and loading
<b>ELECTRICAL USAGE</b>	Amperage for 10,000 GDP pond system: 150A at 480V, 3 phase	Amperage for 10,000 GPD Cloacina system: <75A at 480V, 3 phase
<b>ODORS</b>	Prone to odors because of the difficulty in providing sufficient aeration over a large surface	Highly aerobic which naturally mitigates odors
<b>SAFETY &amp; SECURITY</b>	Animals can fall in/expensive to fence and secure	Easy and less expensive to secure
<b>EFFLUENT QUALITY</b>	Estimated effluent quality is greater than 150 mg/L BOD and TSS	Estimated effluent quality is less than 10 mg/L BOD and TSS

<sup>1</sup> The dimensions of the pond shown are approximate. Individual treatment pond sizes may vary. <sup>2</sup> Comparisons based on 10,000 GPD of high-strength process waste



**THIS MODEL CAN RECLAIM 100%  
OF THE TREATED EFFLUENT**

CLOACINA.COM | SALES@CLOACINA.COM | 888.483.8469